



*When your Dream
Comes into Reality.....*



*Sri Venkataramana
Residency*



About Us

Saishakti has, over years earned a resounding reputation for building the finest homes in the choicest locations. With their dedication to quality and innovative concepts and futuristic vision with each of their ventures, they have been stretching the definition of comfort, convenience and luxury in urban dwellings.

“Simplicity with all comforts”



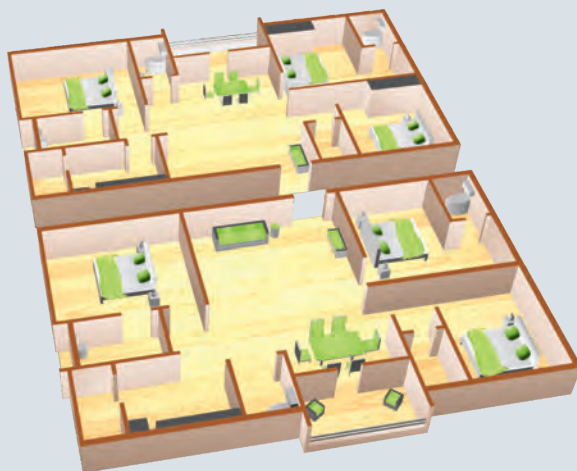
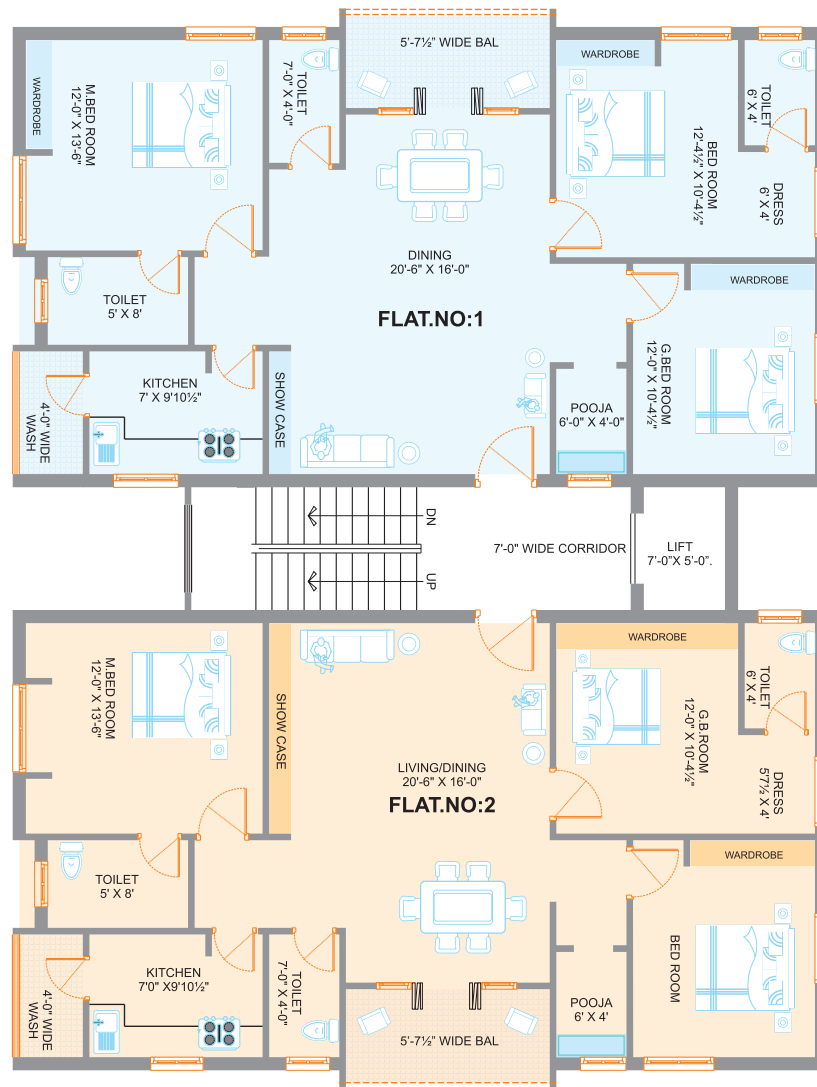
www.ssinfra.net

SAISHAKTI
INFRASTRUCTURE
The Quality Builders & Developers

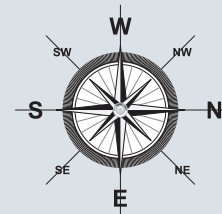
A Glittering Lifestyle!



Typical Floor Plan



3D View of Three Bed Room Flats

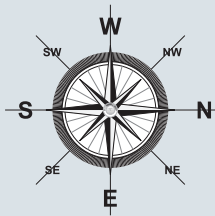
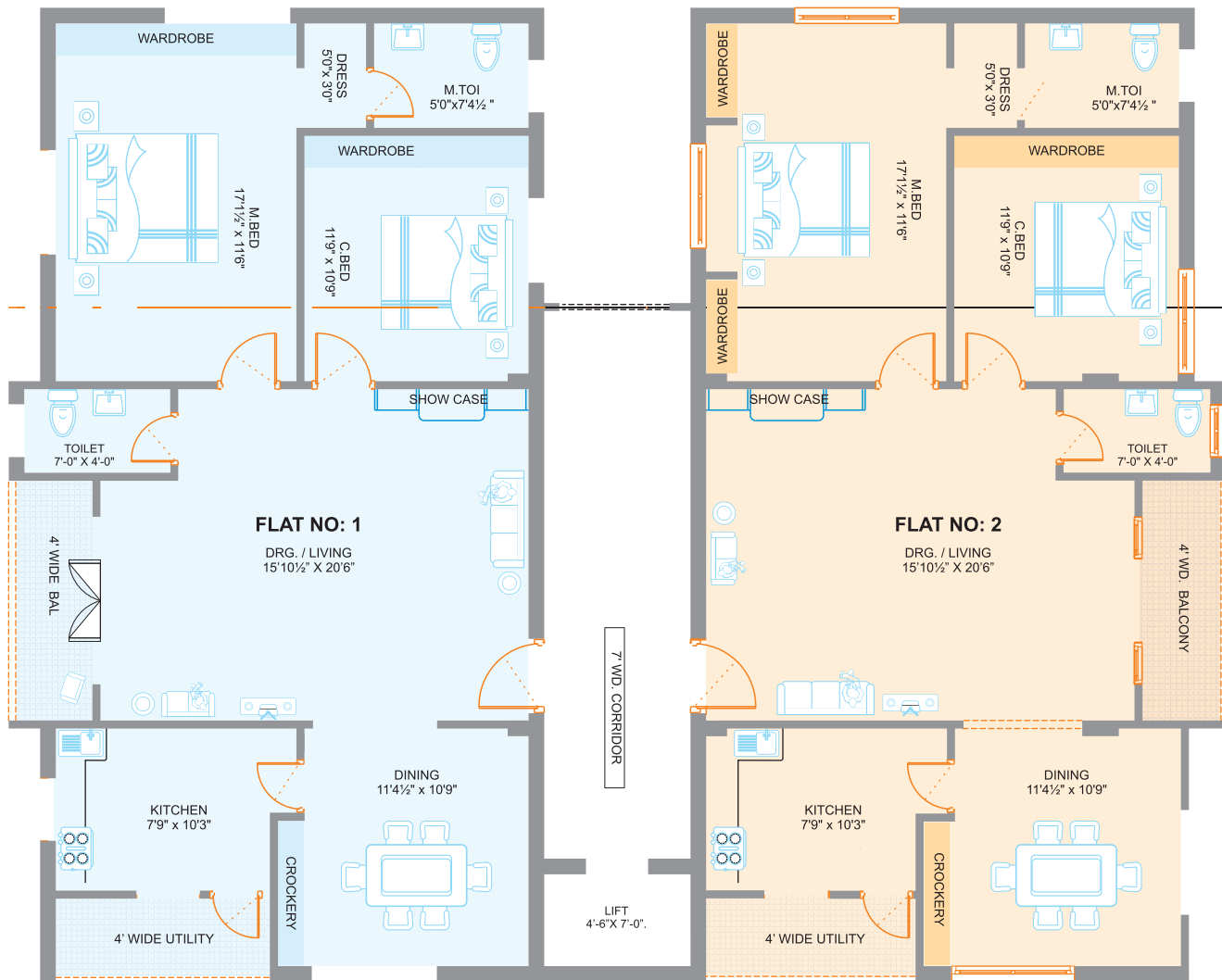


Block 1
Sri Venkateswara

AREA STATEMENT

Flat No.	1	2
Areas in Sft	1500	1500

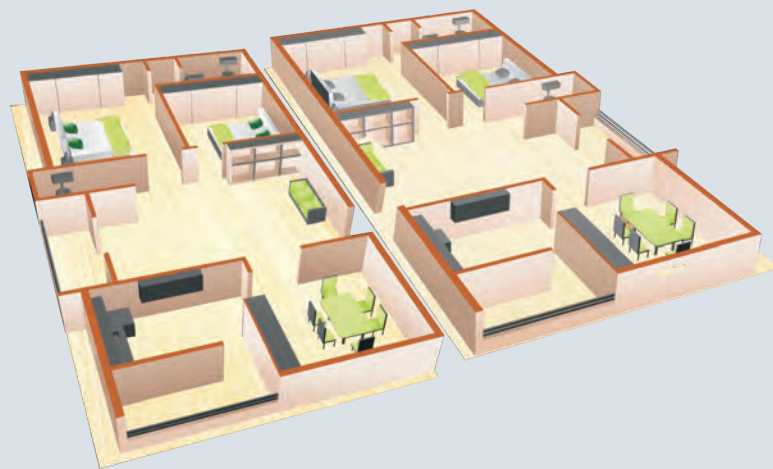
Typical Floor Plan



Block 2
Sri Ramana

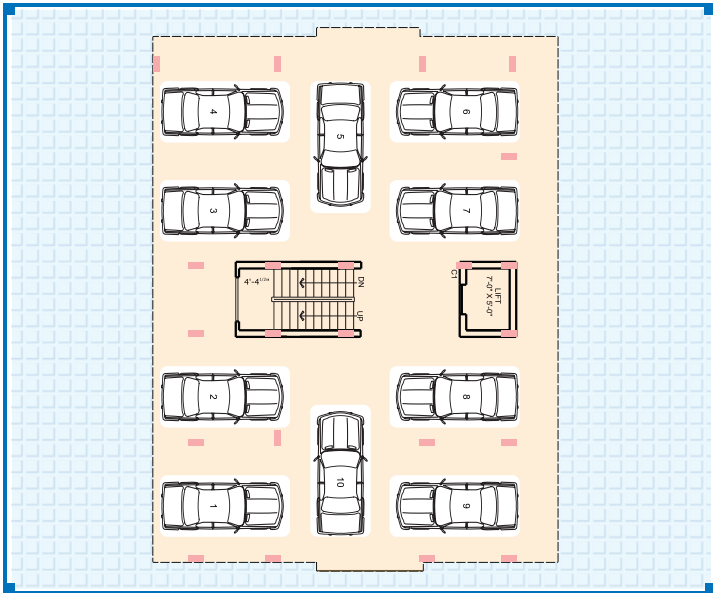
AREA STATEMENT

Flat No.	1	2
Areas in Sft	1400	1400

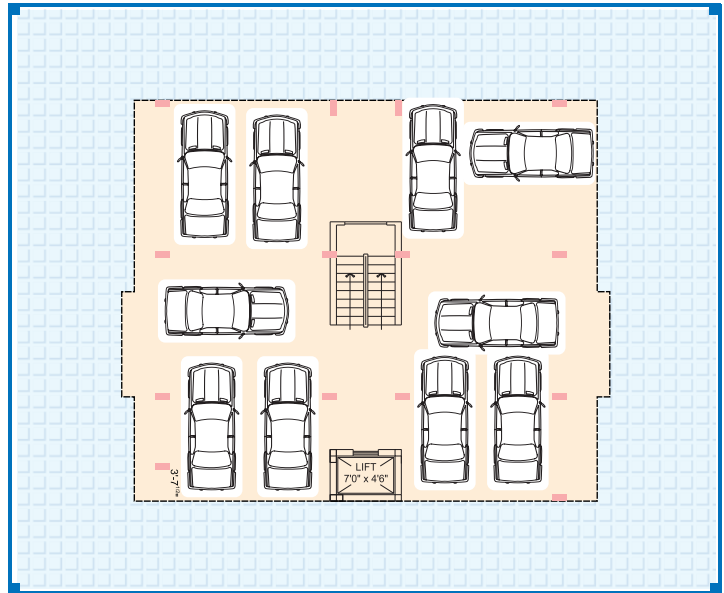


3D View of Two Bed Room Flats

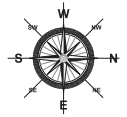
Stilt Floor Plan



Block 1 Sri Venkateswara



Block 2 Sri Ramana



View at Night Mode

Come beat life in all its beautiful proportion

Saishakti persisting the custom of framing fore-most homes, now presents yet an additional prominent complex. A commendable project with alluring amenities and unique infrastructure. The apartments represents new touchstone in comfort, charm and lavish. Easily living, expertly designed to relax, cheer and to tone up the bonds of a happy family experience. Our motto is to transform urbanization process from the ordinary to the extraordinary. SaiShakti Infrastructure ensures its residents a glittering lifestyle combined with companionable vicinity.



Specifications:



Foundation & Structure:

Seismic II Zone complaint RCC framed Structure.



Super Structure:

Outer walls are 9" Thk & Inner walls are of 4¼" Thk first class brick work in Cement Mortar (1:6 Prop).



Plastering:

All walls (internal and external) of two coats plastering with sponge finish.



Door:

Main Door: Teak wood door-frame & Shutter aesthetically designed with polish and hardware of reputed make.



Internal Doors:

Teak wood frames and OST Panel Shutters.



Windows:

Anodized Aluminium frames & shutters with glass panels & Provision for mosquito mesh shuttes, fitted with elegantly designed M.S Painted safety grills.



Cornice:

Designer POP Cornice in Drawing/Dining & Bed rooms.



Painting:

Interior: Smooth finish with altek luppam with 2 coats of Acrylic emulsion paint of Asian/Berger/ICI Paints.

Exterior: Acrylic based exterior paints of Asian / Berger/ICI make.



Flooring:

Vitrified Tiles in Hall, Dining, Kitchen & All Bedrooms. Anti Skid Ceramic tile flooring for all toilets and utility areas.



Tiles cladding & Dado:

Kitchen: Glazed Ceramic tile dado upto 2'0" height above kitchen platform.

Toilets: Glazed ceramic tile dado up to 7'0" height.



Kitchen:

Granite platform with stainless steel sink with both municipal & bore water connection & provision for fixing of Aqua – Guard and modular kitchen.



Utilities/Wash:

Provision for washing machine, dish washer & wet area for washing utensils etc.



Lift:

6 – Passenger lift for each block (Kone/OTIS/Jhonson) with V3F. Elegant lift lobbies with cladding.



Electrical:

Concealed copper wiring in conduits for lights, fan, plug and power plug points.

Power Outlets for Air Conditioners in all bedrooms.

Power Plug for geysers in all bath rooms.

Power Plug for cooking range chimney, microwave oven, mixer grinder in Kitchen.

Elegant modular electrical switches for safety, One Miniature Circuit Breaker (MCB) for each room provided at the main distribution box within each flat.



TV:

Provision for cable connection in master bedroom and living room.



Internet:

One Internet provision in each flat.



Telecom:

Telephone points in all bedrooms and living area with adjacent power point.

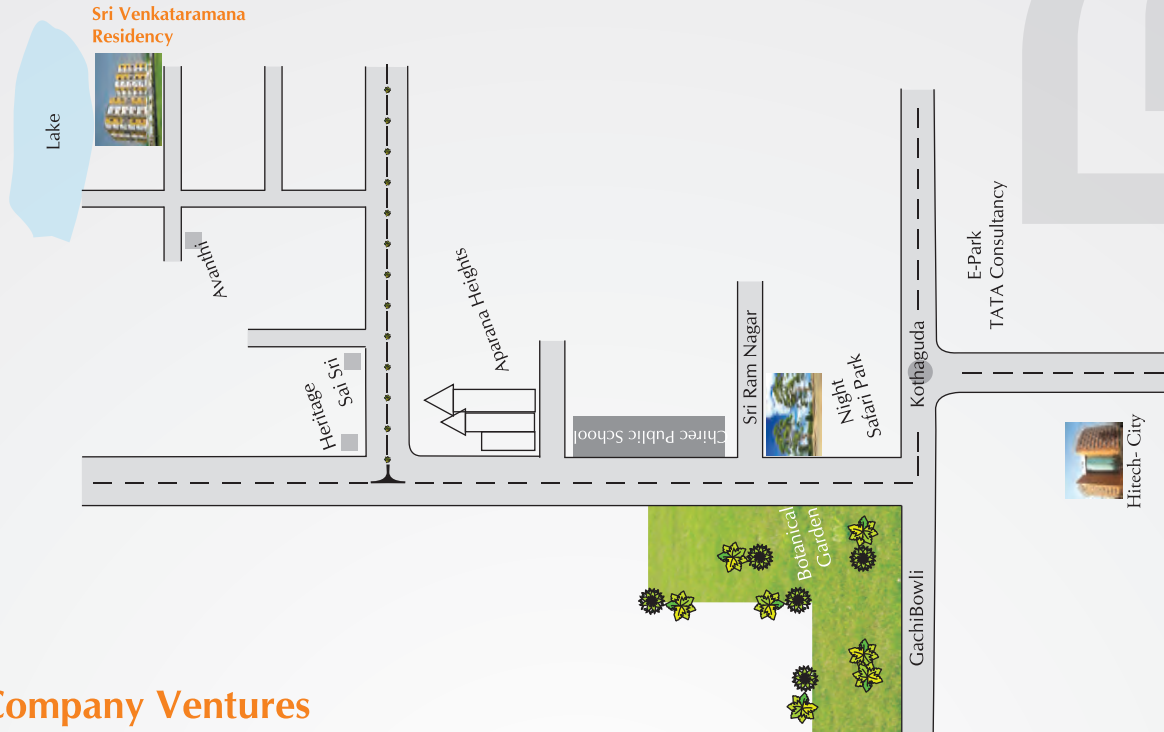
All Flats will be connected to security through intercom facility.



Backup Generator:

Stand-by generator for lights in common areas, lift and the pump. Each Flat will have 4 lights and 4 fan points within the flat with changeover switch.

Route Map



Group Company Ventures



Ashirwad



Archana



Avanthi



Anjali



Sai Sri



Sai Residency



Sai Villa



Sathyasai Residency



Flat No.104, Sai Sri Apartments, Camelot Layout, Near Chirec Public School
 Kondapur, Hyderabad – 500 084
 Tel: 040 – 4025 0259, 95502 49994, 90100 99996, 92468 75222, Fax : 040 – 4025 0259
 E-mail: info@ssinfra.net / Url: www.ssinfra.net

Architect:

D.V. Consultants

Flat No.101, Sri Sai Ranga Baskar Residency, Opp: Sri Sai Ranga Theatre, Miyapur, Hyderabad – 500 049

Mob: +91 - 944 123 2026

Note: This brochure is only a conceptual presentation of the project and not a legal offering. The promoters reserve the right to make changes in the elevation, plans and specifications as deemed fit.